

INFORMATION ONLY

www.downtownrealty.ca
416-558-3538

Design your destiny

and evolve to the next level of luxury



*Superbly located, exquisitely designed
and lavishly appointed...*

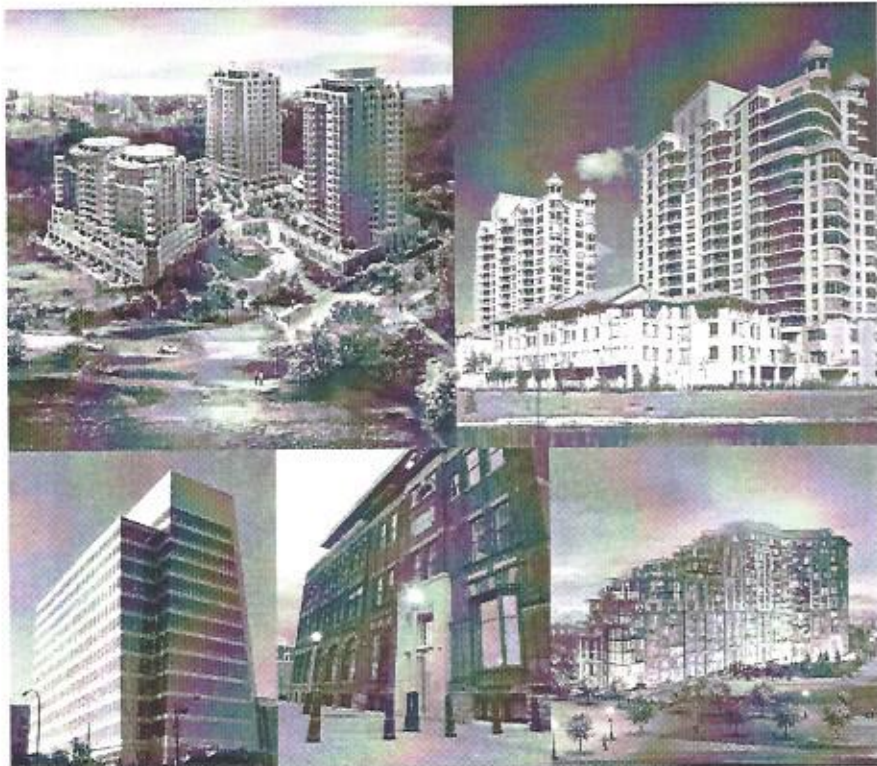
The Grandview Suites

downtownrealty.ca
416-558-3538

A vibrant new landmark
from a visionary developer

The Waterford & Waterford Towers
Toronto

Newport Beach
Toronto



Number One Riverside
Windsor

Massey Harris Lofts
Toronto

DNA
Toronto

Founded in 1975, the Canderel group of Companies is a fully integrated real estate development corporation headquartered in Montreal and active in major markets across Canada.

The company is dedicated to quality in all aspects of residential, commercial and recreational real estate, including land assembly, design, construction, project management, leasing, financing and property management. High standards of operation and prudent management are trademarks of the firm, and have contributed to the success of many of its projects, including Newport Beach and The Waterford on the Toronto waterfront, Massey Harris Lofts, Number One Riverside - Windsor's newest landmark and the DNA condominiums in the trendy King West Village of Toronto. Over the past 30 years, Canderel has acquired, developed or co-ventured more than 15 million square feet of property, with numerous additional developments now in the planning stages.

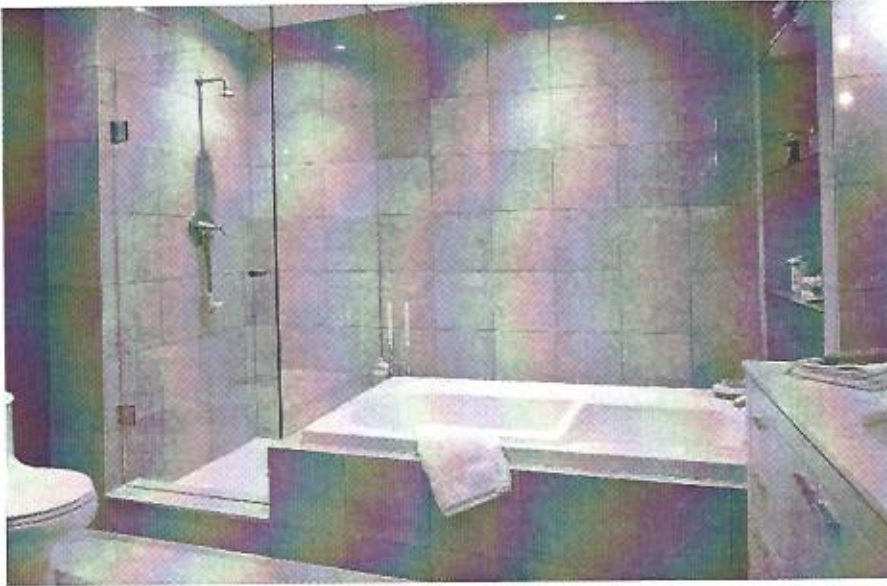
Downtown office towers...retail shopping centres... corporate business parks...hotels and resorts...and an increasing number of residential projects...all combine to produce one of the most diverse and dynamic portfolios possessed by any Canadian developer. Now, Canderel Stoneridge is creating a new landmark - The Residences of College Park, where they will once again demonstrate how vision, experience and expertise are all absolutely integral in the pursuit of excellence.



www.canderelstoneridge.com



Retreat to
the top of the world



Immerse yourself in a privileged world where the most luxurious appointments imaginable are yours to savour each day, in a stunning choice of suites that range from supremely spacious to positively palatial.

Sensual bliss awaits you in every corner of every room, all with an effusive sense of openness imparted by ceilings that soar to a height of 9 feet...and a lofty 10 feet for those who choose to reside on the two uppermost floors.

Floor-to-ceiling windows stretch in every direction, offering views that kiss the clouds and bring the blue skies indoors.

Kitchens are exquisitely equipped for the most demanding of gourmet chefs, with a delectable choice of designer cabinetry, the finest granite countertops with undermount sinks and elegantly fashioned fixtures, and a full complement of state-of-the-art stainless steel appliances. Included in this host of civilized appointments is a wine fridge to ensure your favourite vintages are kept chilled at the proper temperature.

Bathrooms are equally impressive in the breadth of their finishes and the calibre of their craftsmanship highlights the marble baths, frameless glass shower and double his and her sink vanities. And the grandeur of your Grandview Suite extends as well to the common areas that lie just outside, with the uncommonly unique and elegant entrance to your front door and the opulently upgraded finishes of the corridor leading to it.

Playground, sanctuary, home...
the Parkview Club

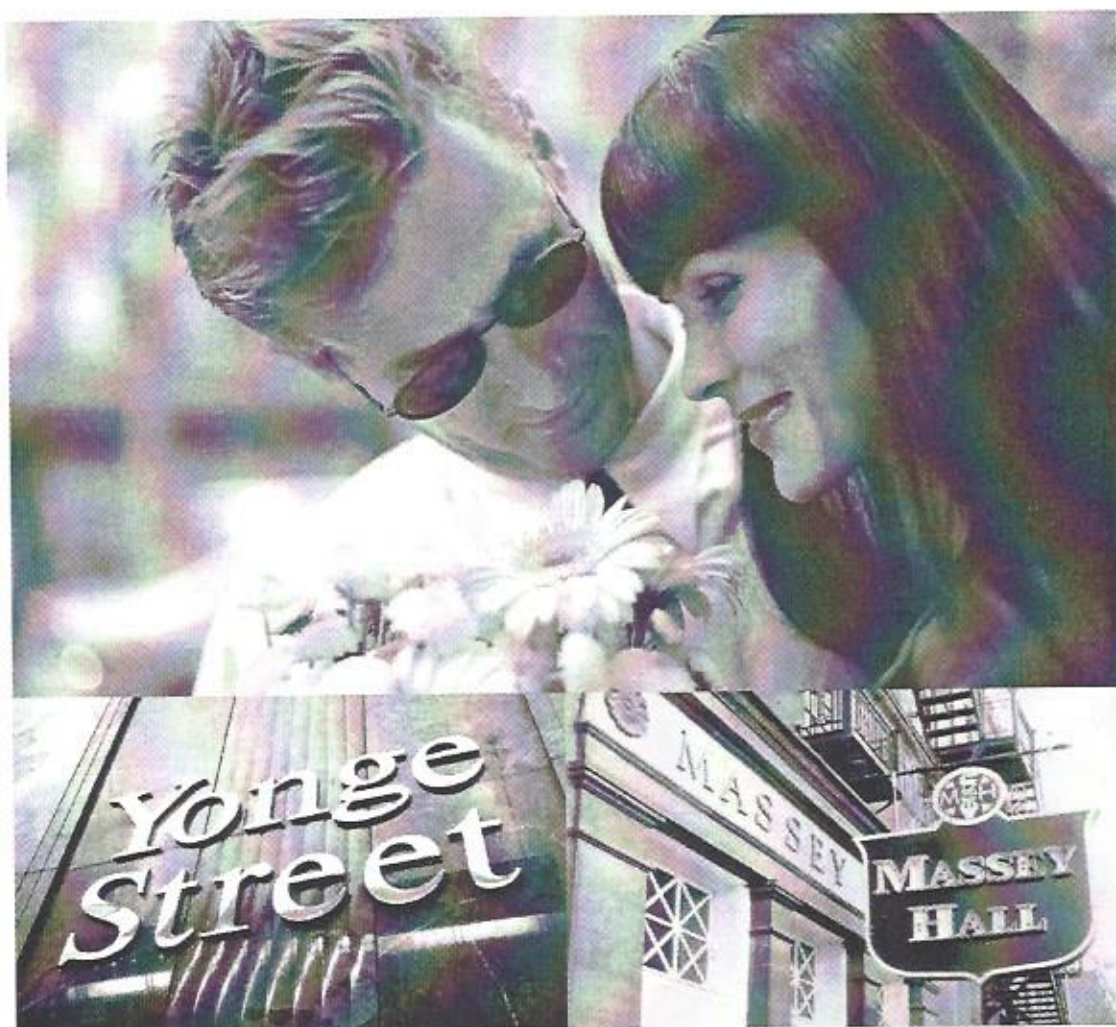


A dramatic entrance and arrival area welcomes you and your guests to The Residences of College Park South Tower. In the lobby, a 24-hour concierge waits to greet you and your guests or accept your parcels.

For your relaxation and leisure time, The Residences of College Park offers residents The Parkview Club, a private recreation centre featuring a well-equipped exercise room and aerobics/cardio room.

Can exclusive way to live

unlike any other in the city





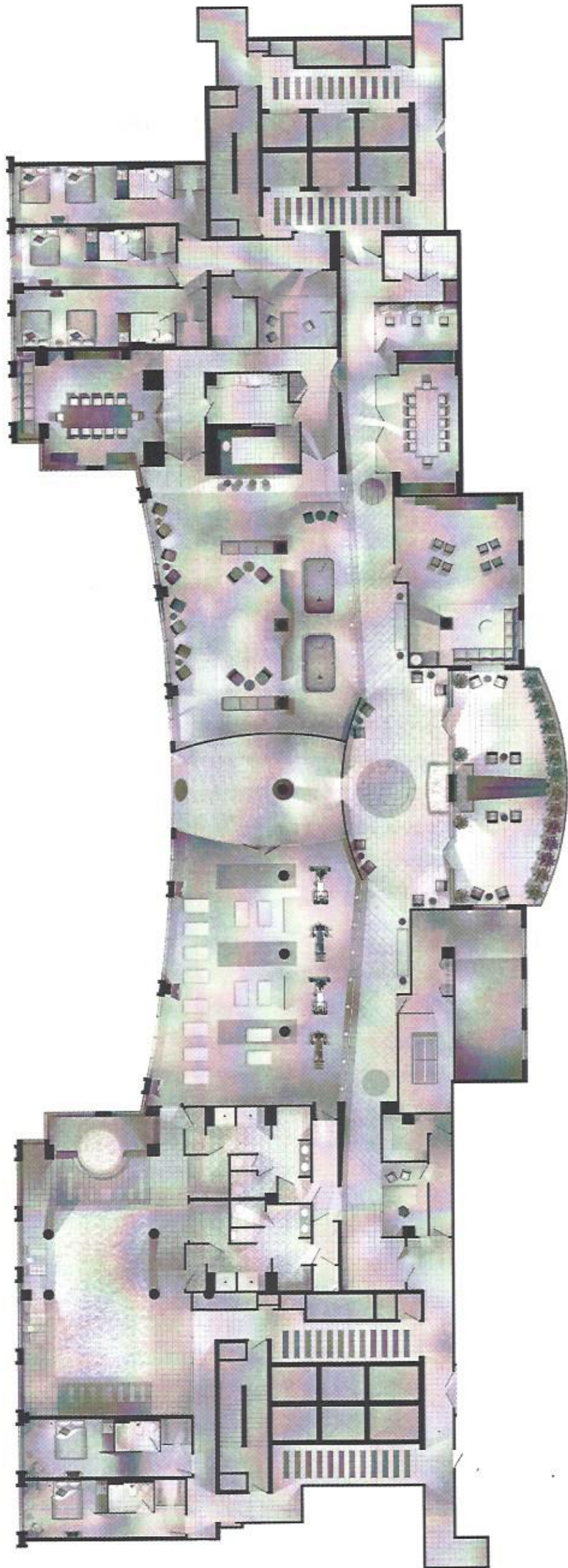
Bay and College is one of the busiest hubs of downtown Toronto...a central axis that is always alive with activity, and with amenities which surround you in every direction. Here everything connects.

Right outside the South Tower is the park that gave College Park its name...an open green 3-acre expanse with a fountain in the summer, a skating rink in the winter. No other downtown condominium backs on to such a park or provides such a pleasant oasis for those seeking to stretch their legs or feel the sun on their face.

Perched high atop the city,

this is your incredible view.





An indoor swimming pool, whirlpool and steam rooms. A multi-purpose lounge and party room with home theatre system, kitchen and bar. A virtual golf centre, a billiards room, games rooms and more. The Parkview Club is a private recreation centre that links the two towers together, architecturally and as a community.

When you need an office or have to arrange an after-hours meeting, there is a conveniently located business centre with conference room.

downtownrealty.ca
416-558-3538



Your Exclusive

features list

downtownrealty.ca
416-558-3538

BUILDING FEATURES

A TOWER TRIUMPHANT IN ITS DESIGN

- A resplendent 45-storey residential tower of glass and steel Art Deco-inspired in its architecture with spectacular skyhigh views overlooking downtown Toronto
- A stunning 2-storey domed lobby provides a first impression of lasting elegance, featuring a polished limestone and granite floor, ceilings with classic plaster moulding, the warmth of traditional wall panel detailing, all complemented by the most tasteful furnishings and artwork
- A professional 24-hour Concierge graciously ushers in residents and their guests, while vigilantly supervising the building's state-of-the-art security systems
- Common areas are of truly uncommon quality with the finest finishing details exhibited in corridors and the uniquely fashioned entrances to each suite
- Individual climate control of centralized heating and air-conditioning in each suite provides for residents' personal comfort year-round
- Offering both exceptional energy efficiency and aesthetics, architecturally designed, expansive double-glazed windows are incorporated throughout the building's facade with pre-finished aluminum window frames
- Guests will be especially impressed by the beautifully landscaped entrance and invitingly designed arrival area
- For fitness enthusiasts and those who value alternative modes of transportation, a bicycle storage room is equipped with a convenient air pump
- Two fully furnished guest suites can accommodate overnight visitors with all the style of a five-star hotel
- A lushly landscaped rooftop garden over the tower's podium base provides the ultimate urban oasis
- Handsomely finished high speed elevators will whisk residents to their respective floors

THE PARKVIEW CLUB - PROVIDING

A RICH ABUNDANCE OF LEISURE ACTIVITIES

- Created by the accomplished and award-winning Chapman Design Group, the Parkview Club lobby and lounge are decorated and furnished with élan
- Phase I amenities encompass a professional business centre with meeting rooms, a spacious party room, a casually elegant billiards room, and a cards room ideal for a foursome of bridge or euchre
- Phase II amenities provide an all-inclusive package of social and recreational facilities in which residents can indulge themselves
- A brightly illuminated Aquatic Centre comes complete with heated indoor swimming pool and a soothing hot tub, as well as men's and women's steam rooms, change rooms and lockers
- A professionally appointed exercise room incorporates the very latest in fitness equipment, including an aerobics and yoga area
- Games rooms provide a wide range of pleasurable pursuits from table tennis to virtual golf
- An exquisitely appointed multi-purpose room features a Hollywood-style Media Lounge with both large screen TV and surround sound system, providing the ideal spot to watch the major sports events of the day or screen the latest film
- Fully equipped kitchen and bar may be reserved with the concierge, for residents' private parties and get-togethers

SUITE FEATURES - EXCLUSIVE TO

GRANDVIEW SUITES ON FLOORS 40-46

- Three dedicated express elevators with upgraded cabs service residents from floors 27 through 46 with virtually no waiting
- Upper floors (40 through 46) also feature upgraded elevator lobbies and corridors, with an impeccable level of detailing throughout
- 8' solid core suite entrance and interior doors with lever handles, 9' solid core doors for floors 40, 45, and 46 (as per plan)
- The spaciousness of 9' ceilings on floors 41-44 in all principal living areas (except kitchens, bathrooms and areas required for mechanical purposes)
- Smooth finished ceilings in all main living areas and bedrooms
- Lofty 10' ceilings on floors 40, 45 and 46 in all principal living areas (except kitchens, bathrooms and areas required for mechanical purposes) impart a sense of grandeur usually experienced only in the city's finest private homes
- Adding an extra measure of peace and privacy are the acoustically treated partition walls between side-by-side bedrooms (as per plan)
- Electric fireplace (as per plan) provides beauty and warmth at the touch of a button
- Designer Line 5-piece stainless steel appliance package consists of a frost-free refrigerator, built-in wall oven, dishwasher, built-in wine refrigerator and spacemaker microwave
- Easy-clean glass cooktop with stainless steel hood vented to exterior
- Premium kitchen cabinetry (from our special Grandview Selection) in a selection of traditional and contemporary finishes and incorporating frosted or fluted glass fronts (as per plan)
- Designer hardware pulls on all kitchen cabinets and drawers
- Under-cabinet valance lighting softly illuminates working surfaces
- A choice of porcelain tile backsplash complements the custom-style cabinetry
- Generously proportioned island worktop with granite topped breakfast bar (as per plan)
- Separate wine fridge (as per plan) to keep one's favourite vintages properly chilled
- Ensuite laundry alcove with stacked full-sized washer/dryer
- Gleaming 12" x 12" marble tiles in the foyer make for a grand entrance
- Classical 5" cornice mouldings elegantly accent both living room and dining room
- Substantial 5-1/2" baseboard and 3" door casements throughout
- Upgraded engineered pre-finished hardwood flooring throughout in a selection of attractive stains as per builders samples
- 12" x 12" imported marble tile flooring in all bathrooms
- Floor-to-ceiling marble tile surround in master bathroom
- Offering his & her convenience, a double sink vanity in the master bathroom is adorned with a marble countertop
- Full length mirror with polished aluminum frame in all bathrooms
- Separate frameless glass shower stall (where applicable)
- Deep 5-1/2' soaker tub with marble surround and one-piece toilet in master bathroom
- Designer bathroom fixtures in all bathrooms, built-in towel and soap shelves in master bathroom

The Vendor shall have the right to substitute other products and materials for those listed in this Schedule or provided for in the plans and specifications provided that the substituted products and materials are of a quality equal to, or better than, the products and materials so listed or so provided.

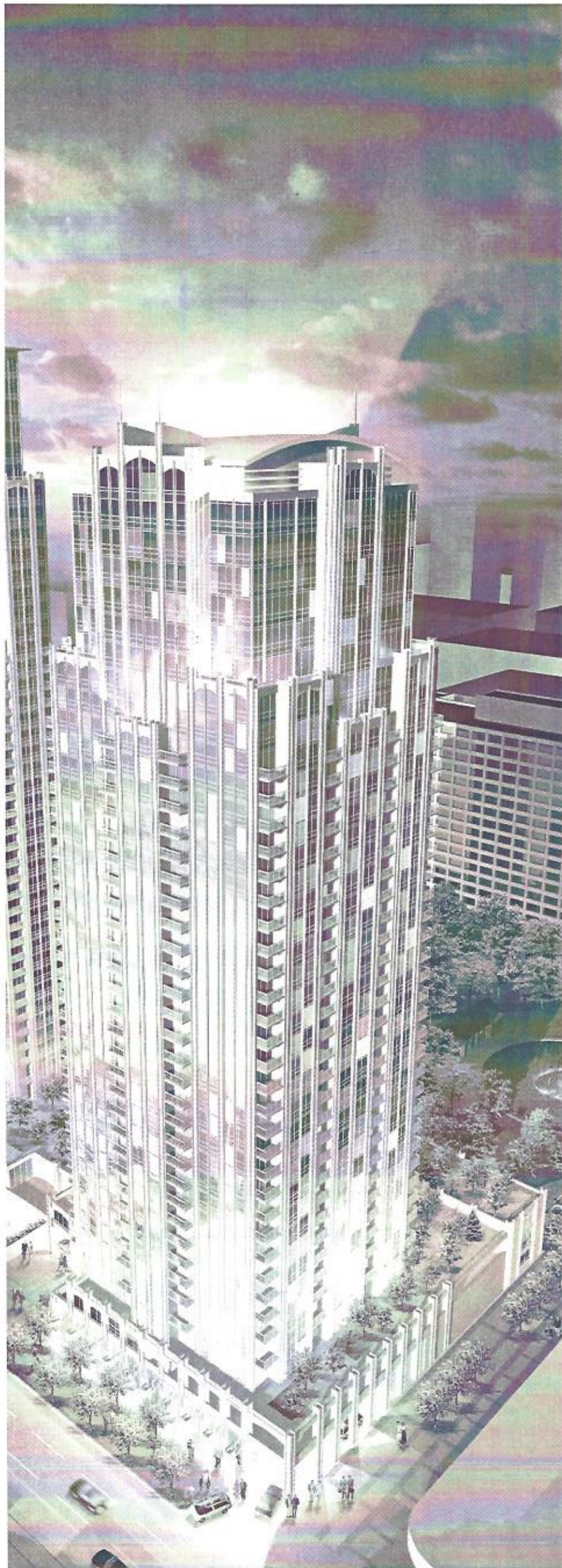
Floor and specific finishes will depend on Vendor's package as selected. All specifications, dimensions and materials are subject to change without notice. E & O.E.

Luxury redefined for the 21st century

with exclusive white glove service

As a Grandview Suite owner, you will be pampered with a wide range of executive concierge services and privileges similar to the concierge services that the finest luxury hotels provide to their guests. This service will cater to you by arranging restaurant reservations, dog walking/grooming, house-sitting services, worldwide travel arrangements, taxi and limousine service, as well as providing information on local attractions, shops, and entertainment venues.

In addition, there is an optional Premium Level service where owners can pay a single annual membership fee that covers all service requests, including the offering of a wide range of products and services at a discounted price, including theatre tickets, restaurants, health clubs, and various shops. Your concierge will be available on a 24/7 basis via telephone or internet (on a website exclusively for College Park residents), and will be happy to assist you in securing virtually anything you need.



There is the kind of luxury that prevails on the streets of Rosedale and Forest Hill. And then there is the luxury that towers high above the city, embracing you in a rich and refined living environment with penthouse views no earthbound mansion could ever hope to match.

Welcome to The Residences of College Park South Tower at Bay and College. Soaring 45 storeys, a sleek and sculpted edifice of stone and steel crowned with blue-tinted glass, this remarkable highrise residence reflects College Park's unique Art Deco history. And now at the pinnacle awaits The Grandview Suites, offering the epitome of elegance in modern downtown living.



NORTH

Toronto's rich heritage is reflected in the historic façade of the parliament buildings at Queen's Park and in the marble halls of the Royal Ontario Museum. Nearby the ivy-covered buildings of the University of Toronto provide sanctuary for the studious. Yet for many, the main destination in this direction are the chic shops, restaurants, cafes and cinemas of the ultra-fashionable Bloor-Yorkville area.

EAST

Immediately east is College Park with its direct underground access from your building to the College subway station. Here too, on the 7th floor, can be found the old Eaton's Auditorium Concert Hall, now magnificently restored as The Carlu. And just outside are the increasingly gentrified stores and restaurants lining Yonge Street.

WEST

Minutes from College Park, the new MaRS (Medical and Related Sciences) research and enterprise district is beginning to take shape. Here you are just a short stroll from Chinatown and the eclectic collection of clubs, restaurants and stores further west on College.

SOUTH

The delights of downtown living beckon you south toward the lake. The entertainment district, alive with its theatres, restaurants and clubs. Shopping at the Eaton Centre or at the fashion forward boutiques of Queen Street. The financial core... the unique profile of Toronto's City Hall.....the cultural attractions of the soon to be Four Seasons Centre for the Performing Arts, they are all in your midst.

The city's fastest, best, finest and most fabulous
is exactly where you are



There are a thousand different reasons to love living in Toronto. Now we've added perhaps the biggest reason of all.

Between College Park, the subway station and Toronto's subterranean PATH network, you have underground access from the building to the entire downtown core with no need for a car to drive you there, and no need for an umbrella when the rain falls.

When your day's business or night's entertainment is complete, stroll back to your highrise home where every modern convenience and creature comfort awaits.



Seventy-five years ago, College Park was Timothy Eaton's flagship store, the most fashionable shop in Toronto, as well as home of the Round Room, the city's most exclusive restaurant.

Today with the release of the South Tower, The Residences of College Park offers the most prestigious and luxurious condominium to ever grace the city skyline.

The tower's soaring two-storey lobby is impeccably appointed with inlaid limestone and granite floors, high domed ceilings and cornice moldings, along with traditional wall panels featuring rich detailing which evokes the classic design of the original College Park building.

Yet it is the South Tower's Grandview Suites that offer the ultimate in luxury living...and at a level of quality replicated nowhere else in the city. Three dedicated elevators are available to serve residents from the 27th storey and above so you are whisked immediately to your floor. Private card access to your floor affords you the greatest security and peace of mind. Upgraded common areas and floor finishes confirm the fact that your skysrise retreat is something truly special. And, of course, once you step inside your suite door, you are presented with the most glorious, unobstructed views that the city has ever seen.

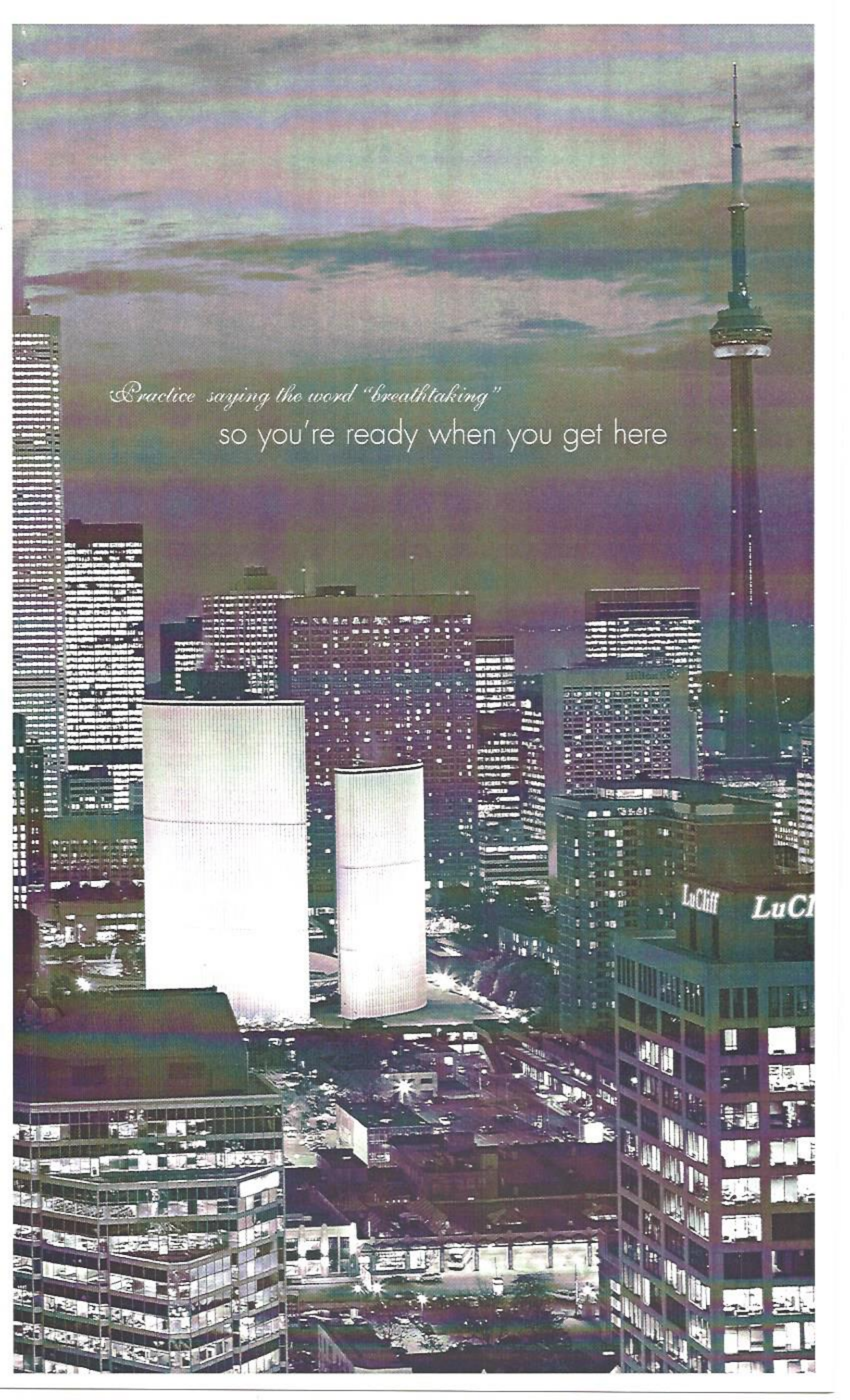
It bears repeating. There is nothing in Toronto like The Grandview Suites... nothing that even comes close.





*Living at the peak of elegance
is an exhilarating experience*



An aerial photograph of the Toronto skyline at dusk. The sky is a mix of purple, blue, and green. The CN Tower stands prominently on the right. In the center, two large, white, cylindrical towers are illuminated. Other skyscrapers are visible in the background, some with lights on. The foreground shows a mix of urban buildings and streets.

Practice saying the word "breathtaking"
so you're ready when you get here