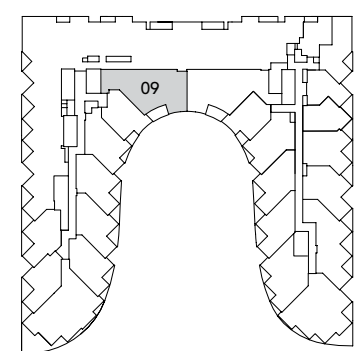
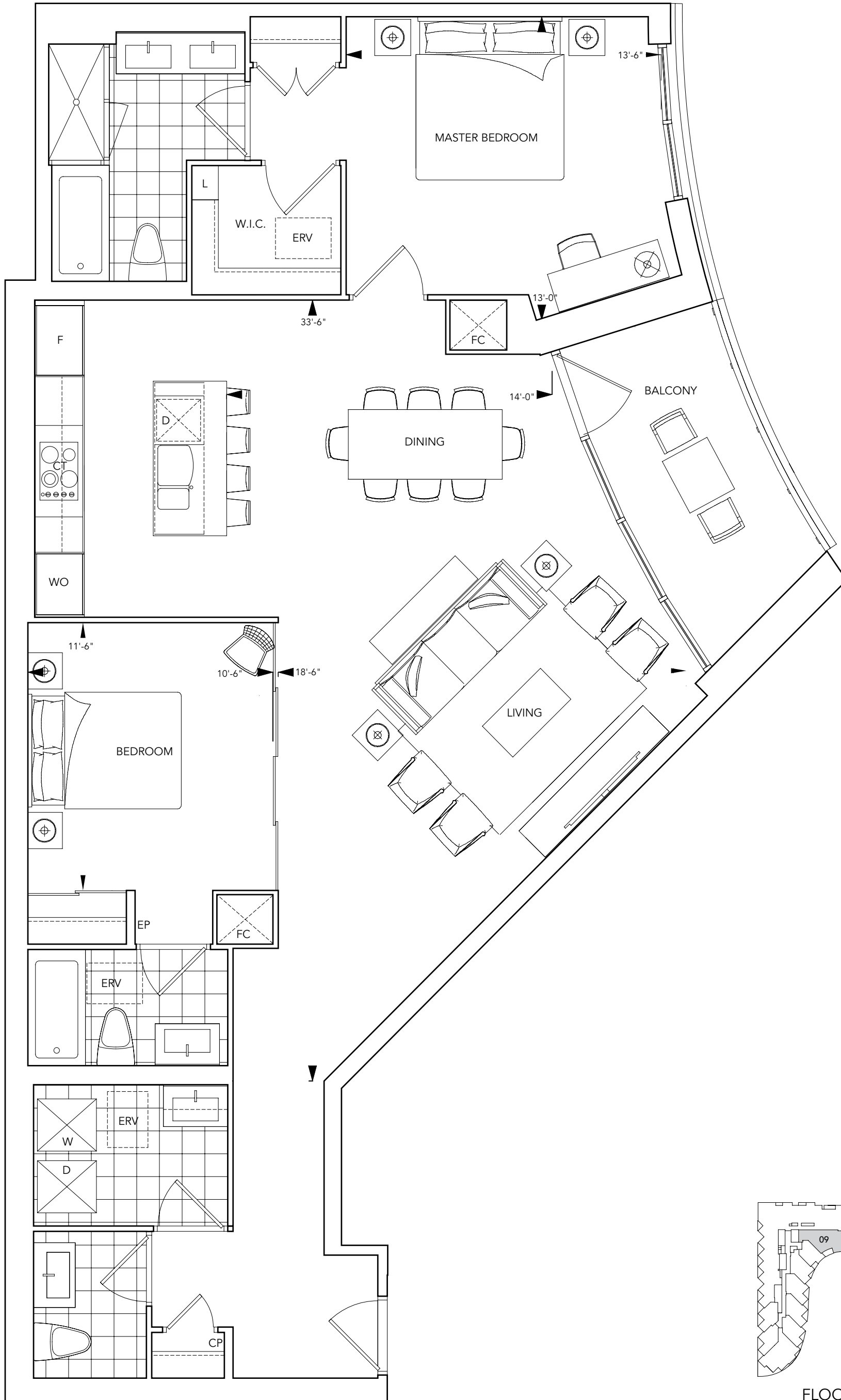


SUITE S2a

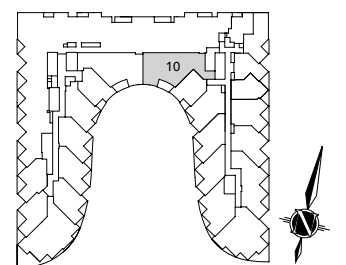
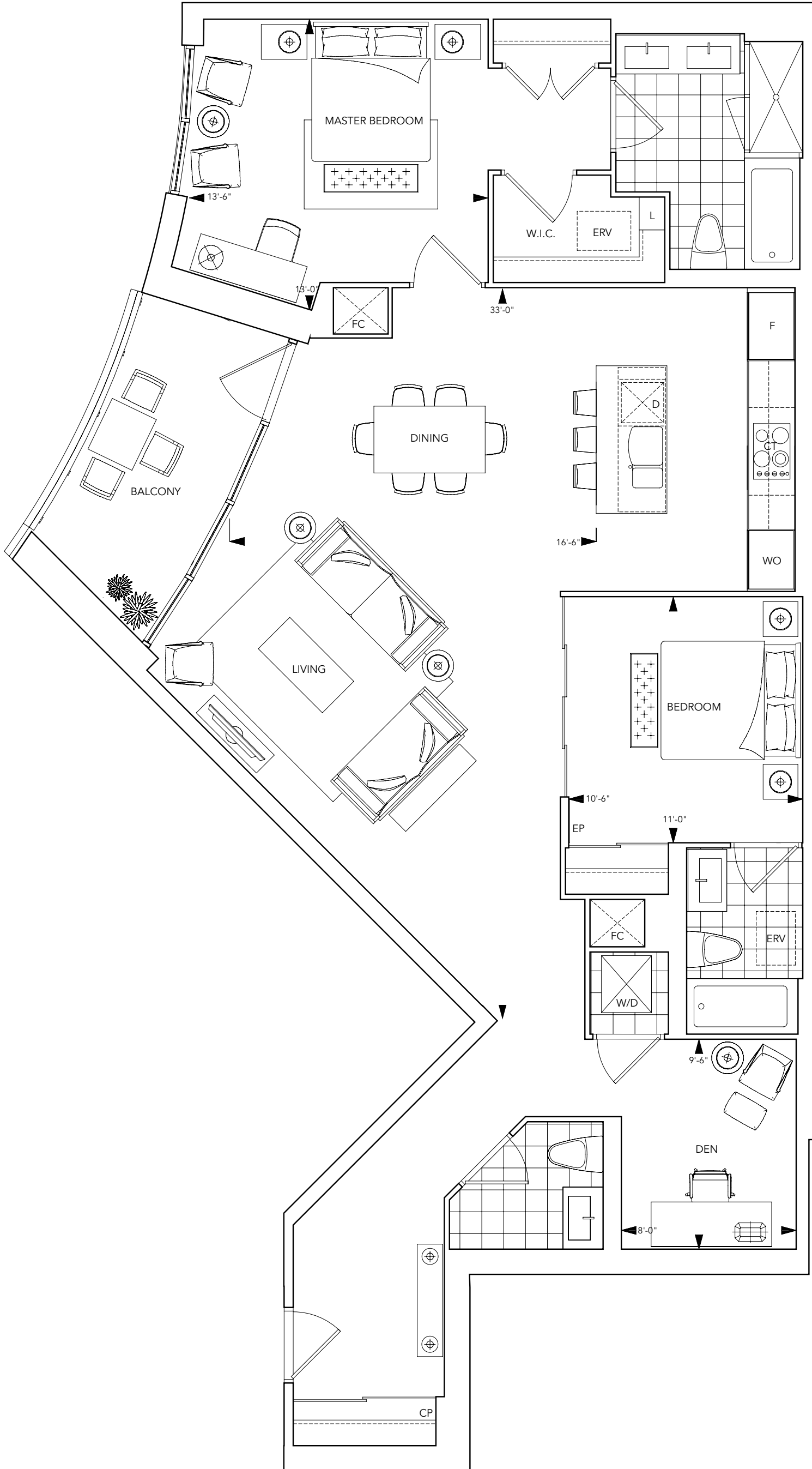
TWO BEDROOM / 1,383 SF



FLOORS 4-6

SUITE S4a

TWO BEDROOM / 1,465 SF

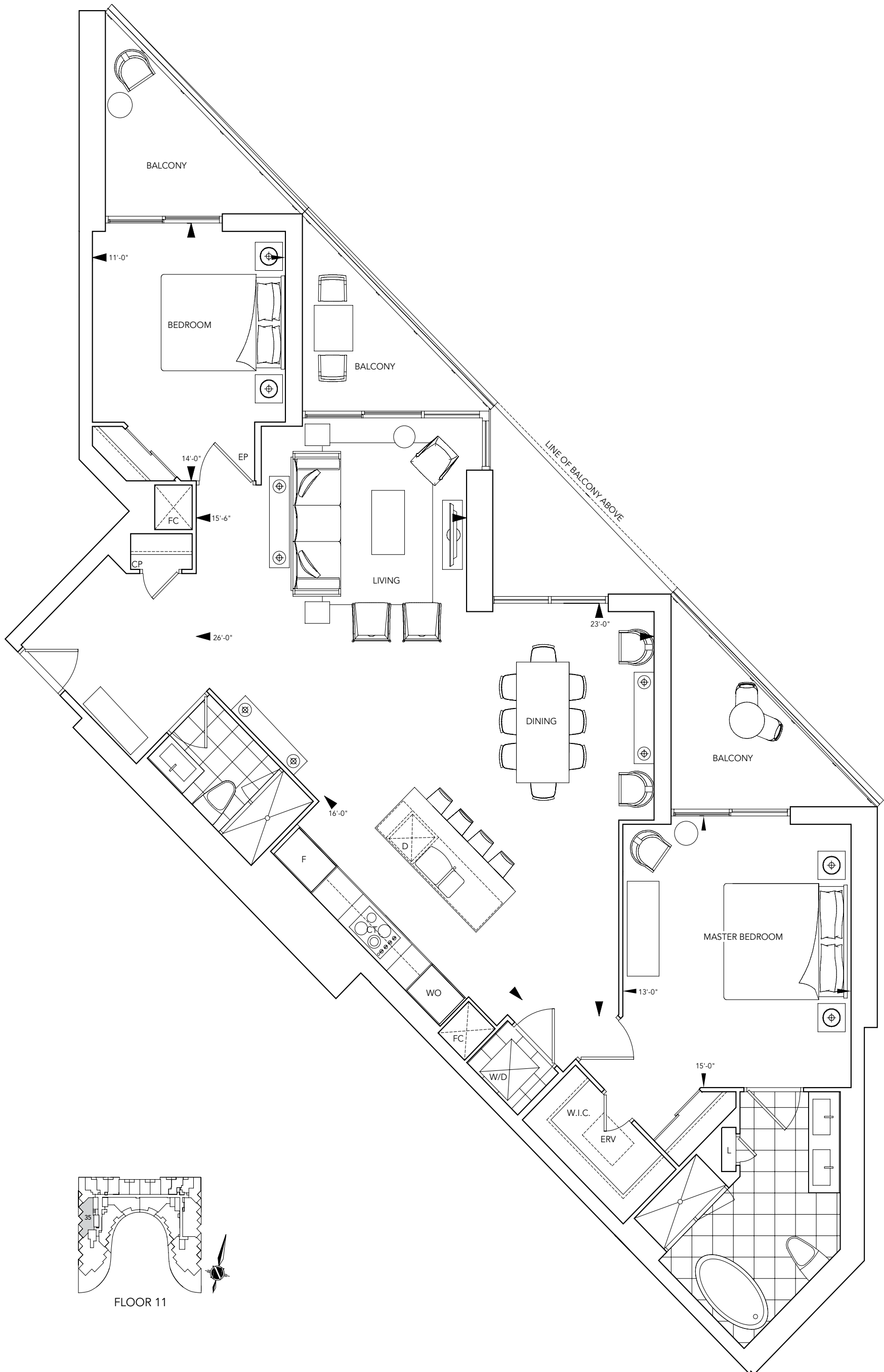


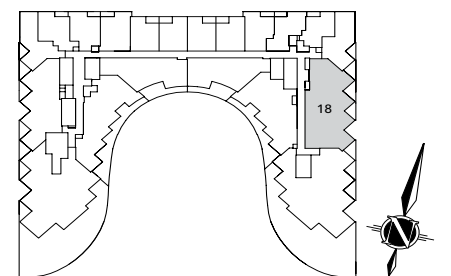
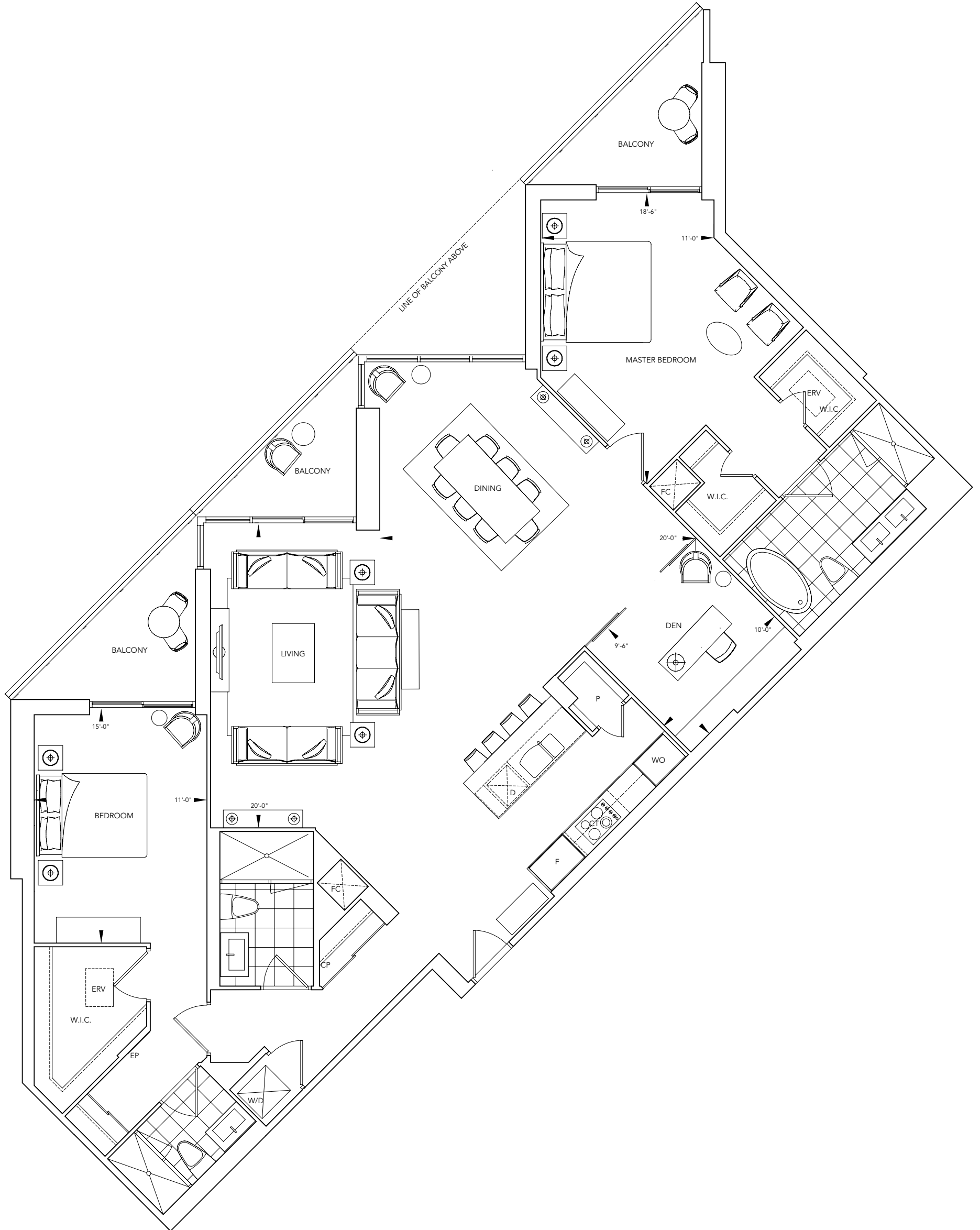
FLOORS 4-6

Some features may vary by suite design. \*Prices and specifications subject to change without notice. Illustrations are artists' concepts. Sizes and specifications are subject to change without notice. Furniture is displayed for illustration purposes only and does not necessarily reflect the electrical plan for the suite. Suites are sold unfurnished. See sales representative for details. Tridel® and Tridel Built Green. Built for Life.® are registered trademarks of Tridel and used under license. ©Tridel 2014. All rights reserved. E. & O.E. December 5, 2014.

SUITE S9

TWO BEDROOM / 1,420 SF

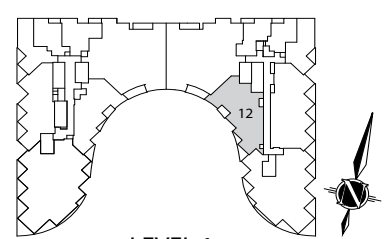
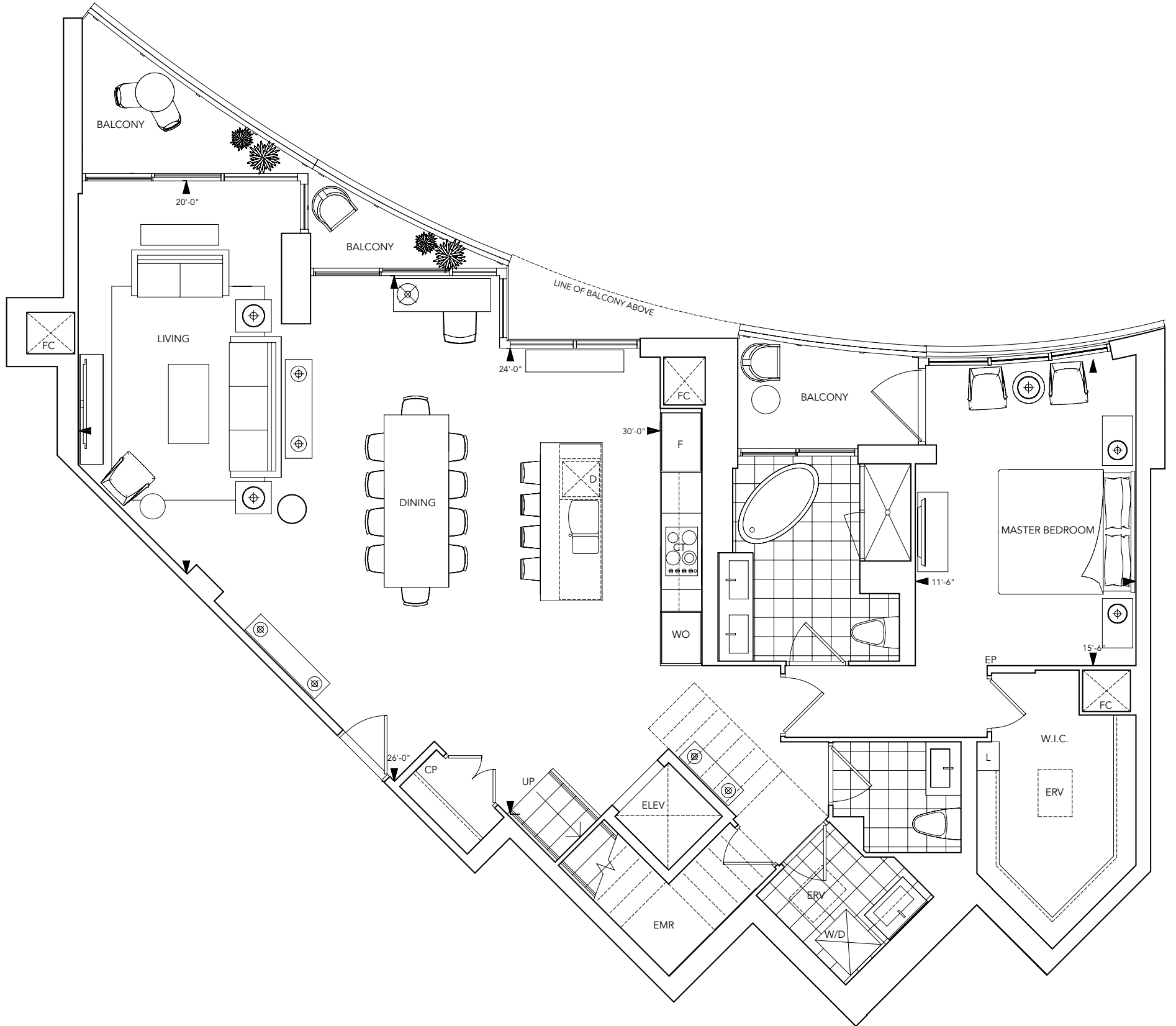




FLOOR 11

SUITE PH12 - Level 1

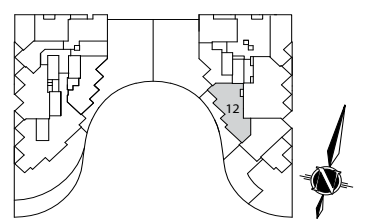
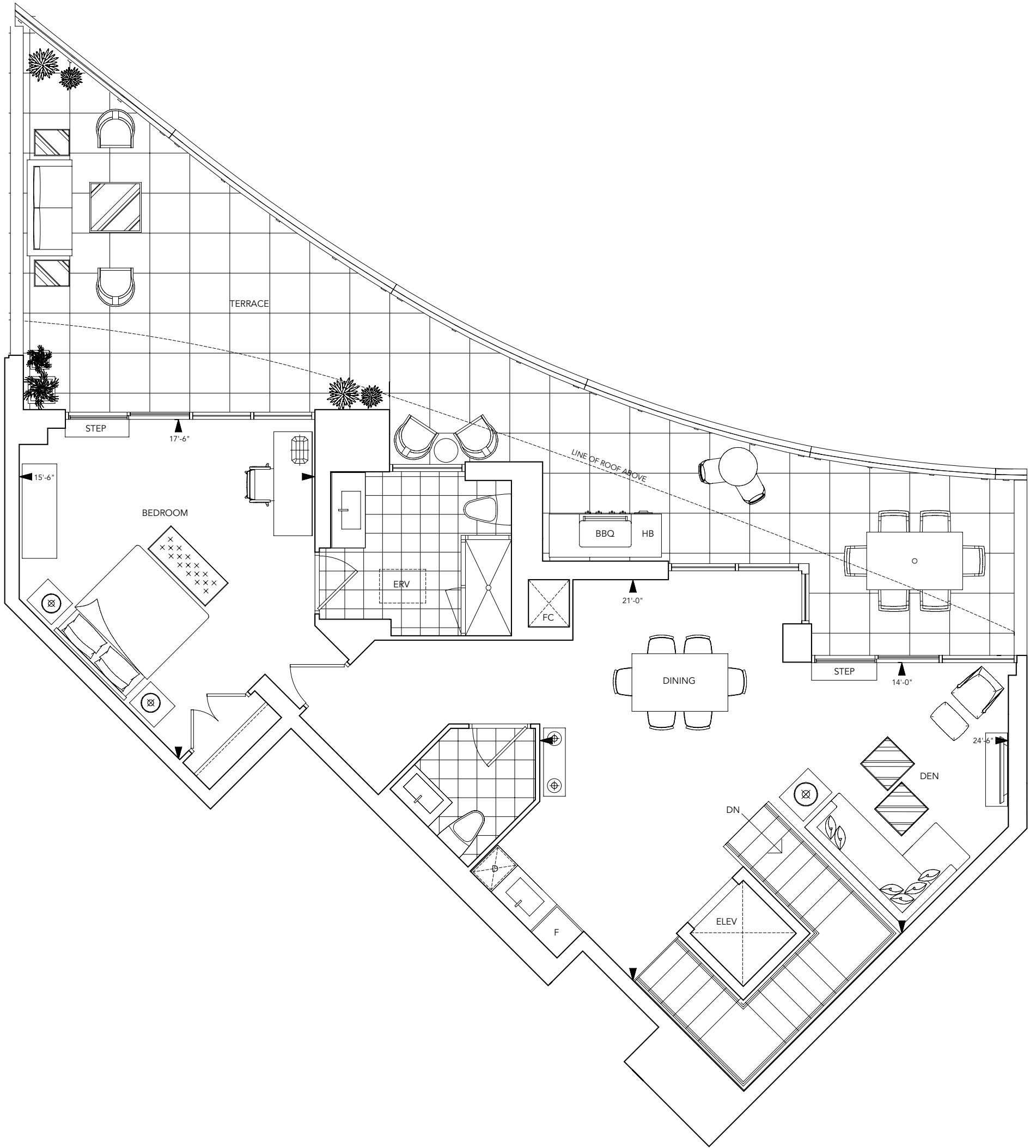
TWO BEDROOM / 2,522 SF



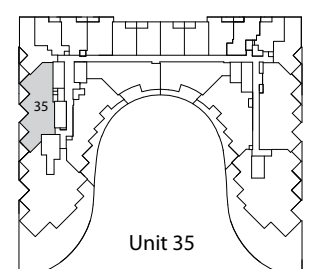
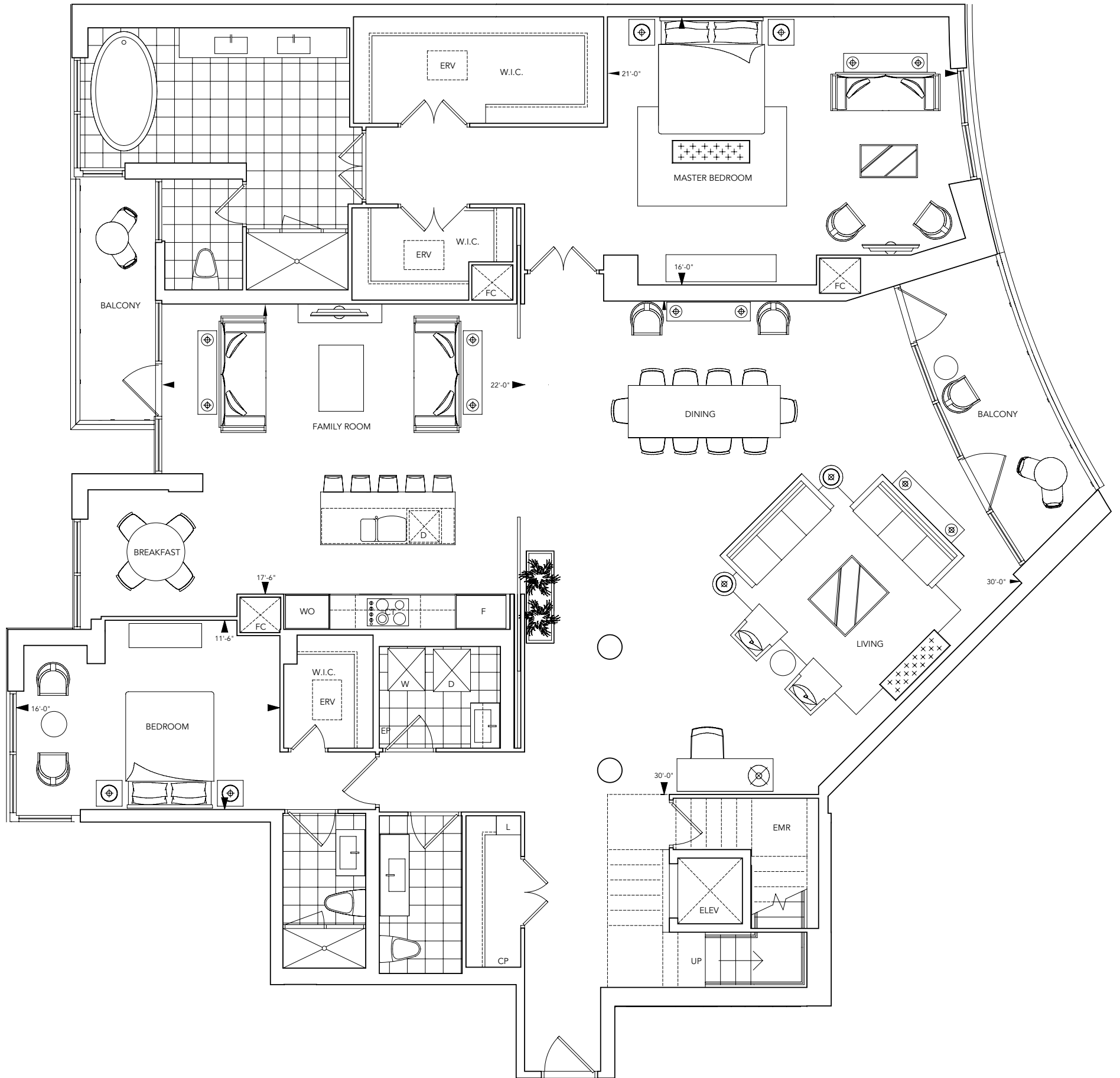
LEVEL 1

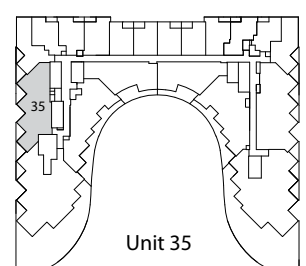
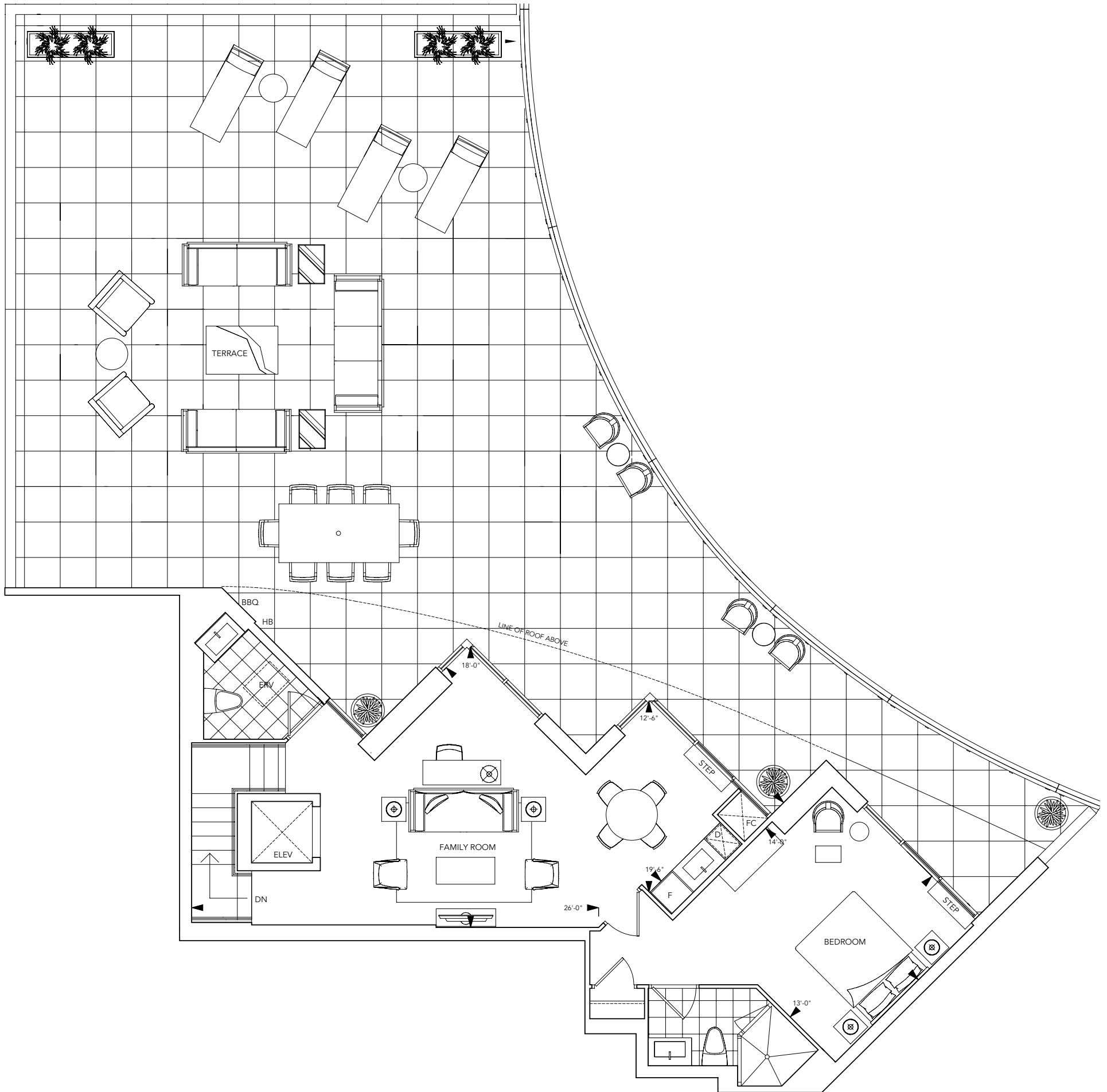
SUITE PH12 - Level 2

TWO BEDROOM / 2,522 SF



LEVEL 2





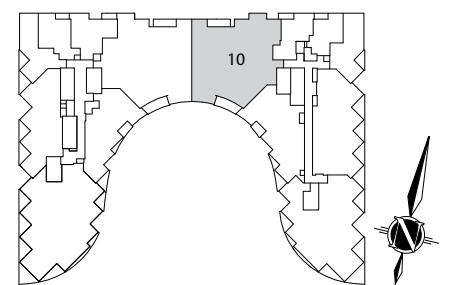
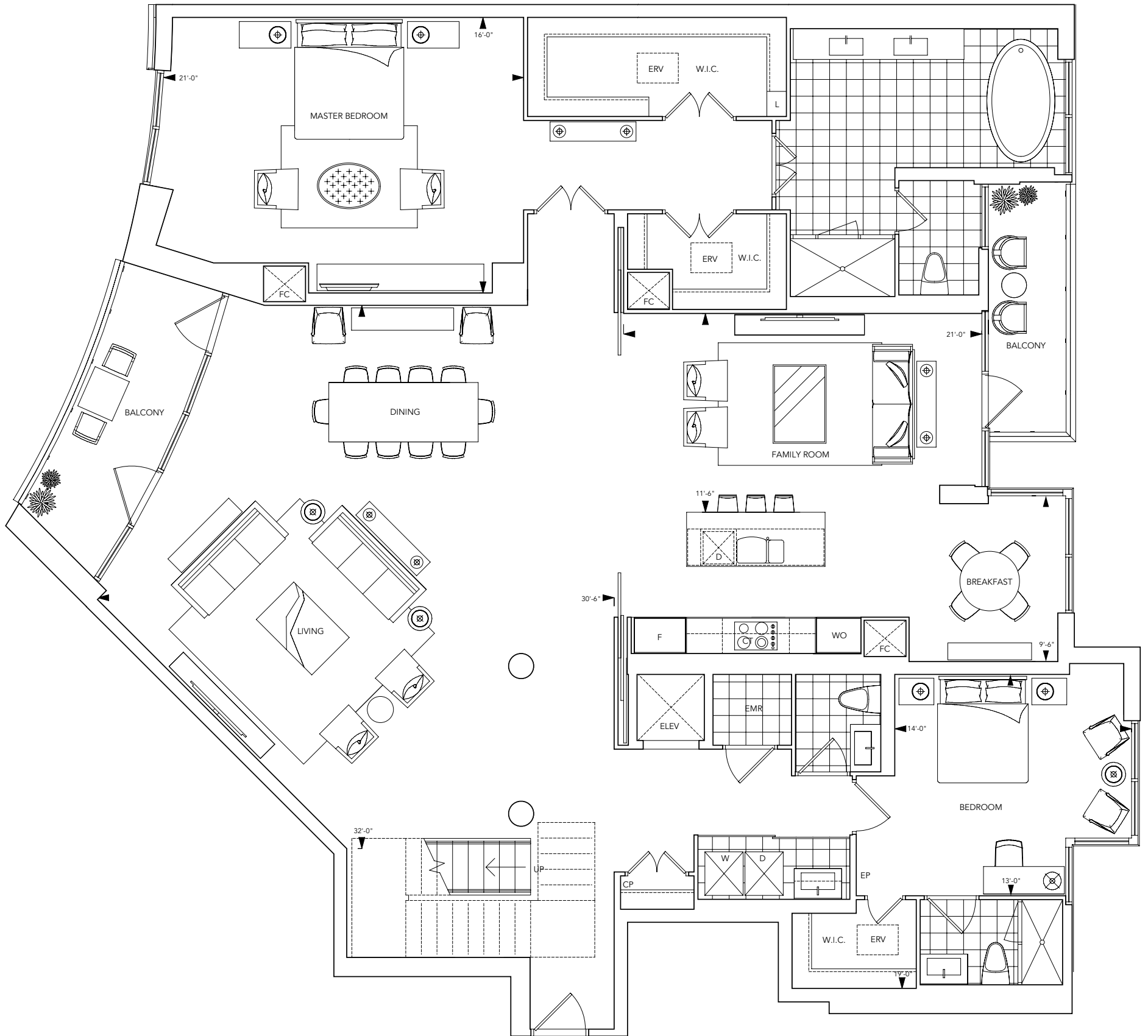
Unit 35





SUITE PH10 - Level 1

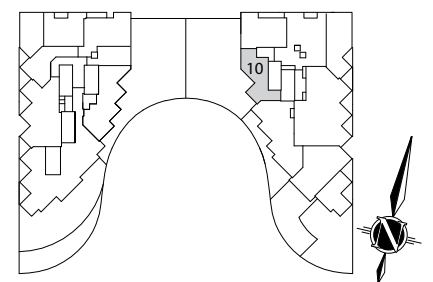
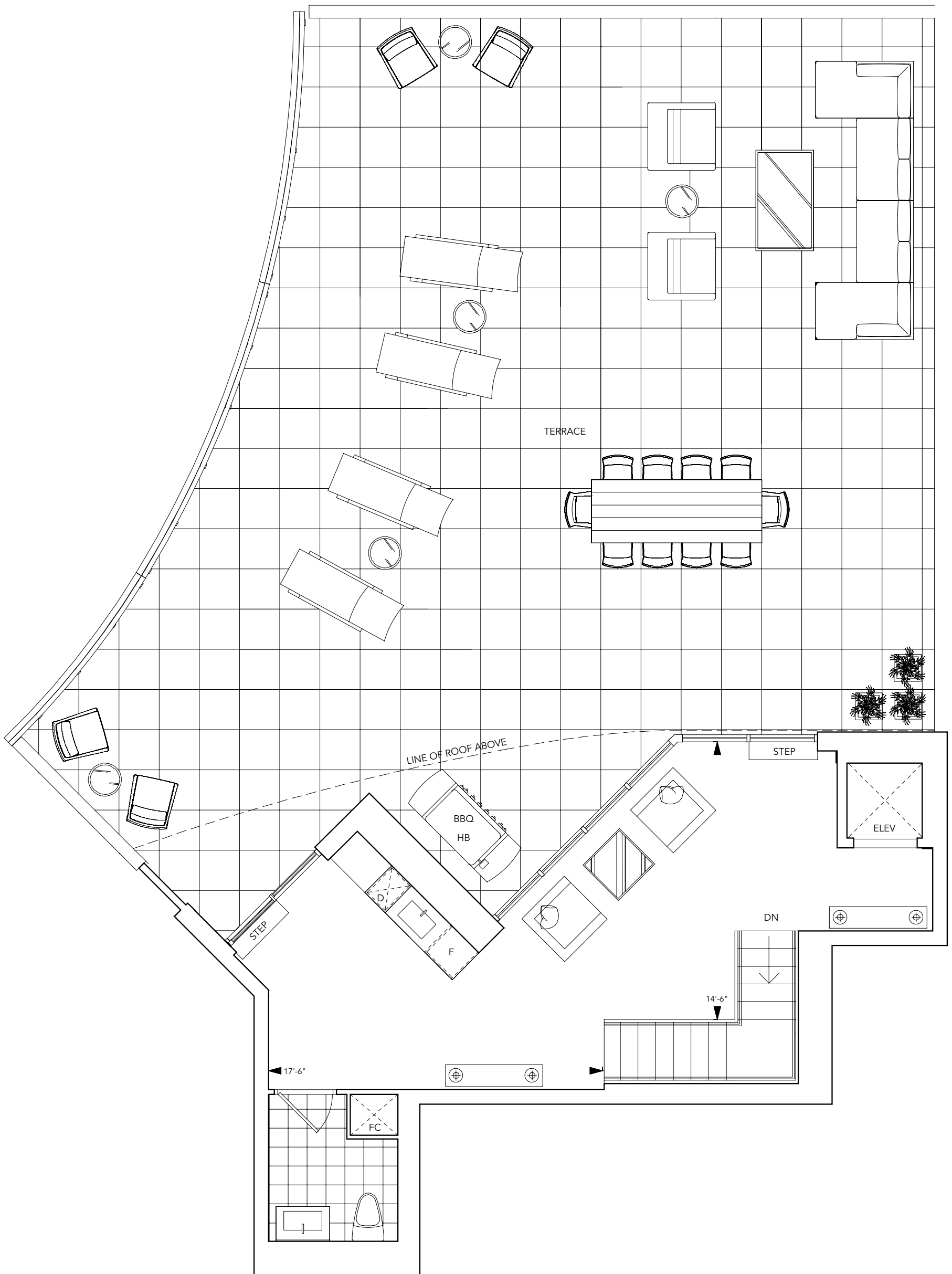
TWO BEDROOM / 3,447 SF



LEVEL 1

SUITE PH10 - Level 2

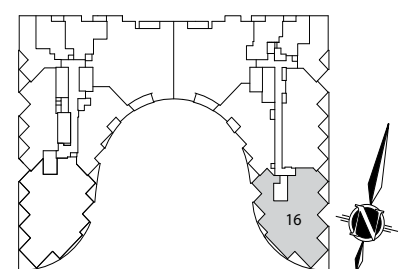
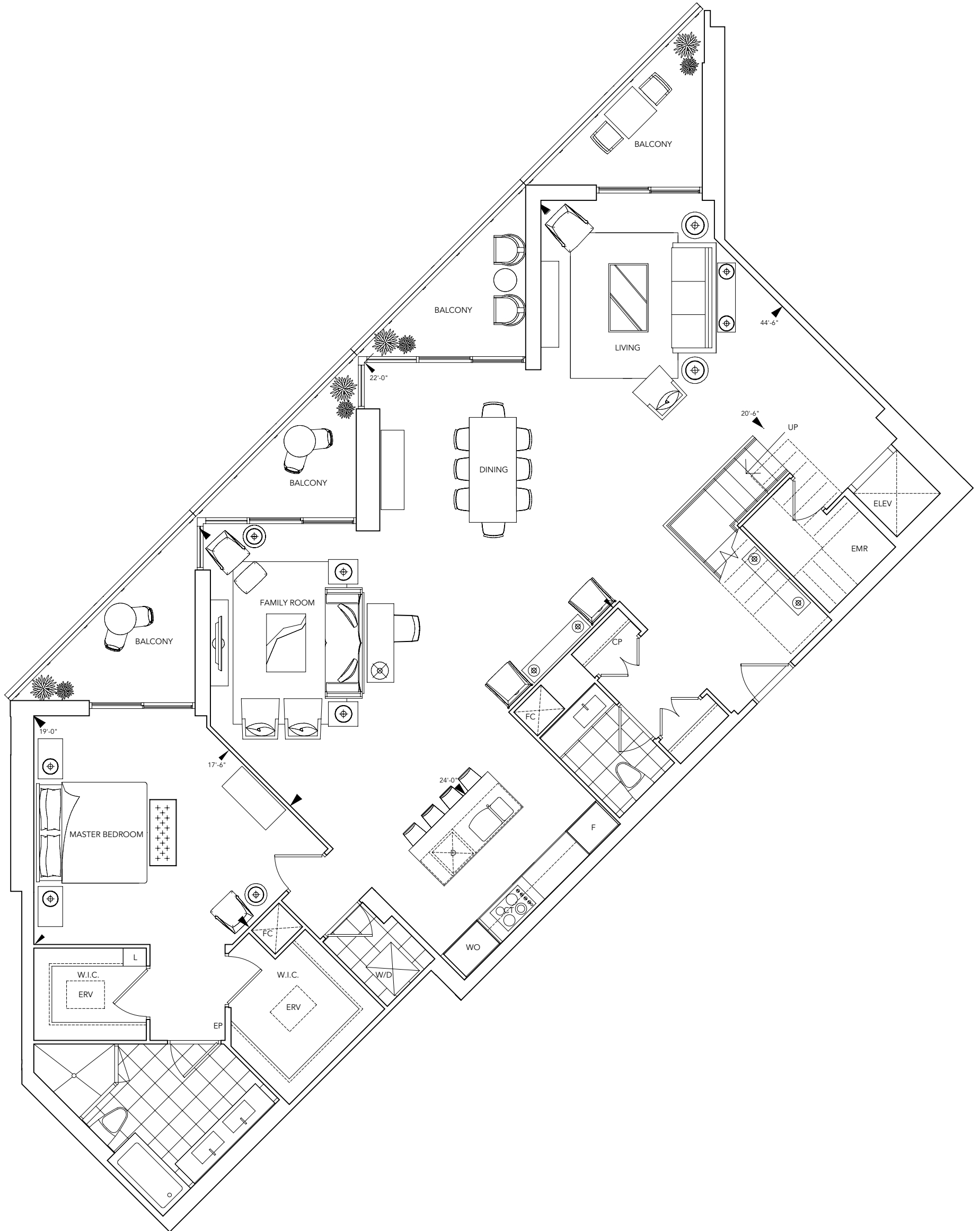
TWO BEDROOM / 3,447 SF



LEVEL 2

SUITE PH18 - Level 1

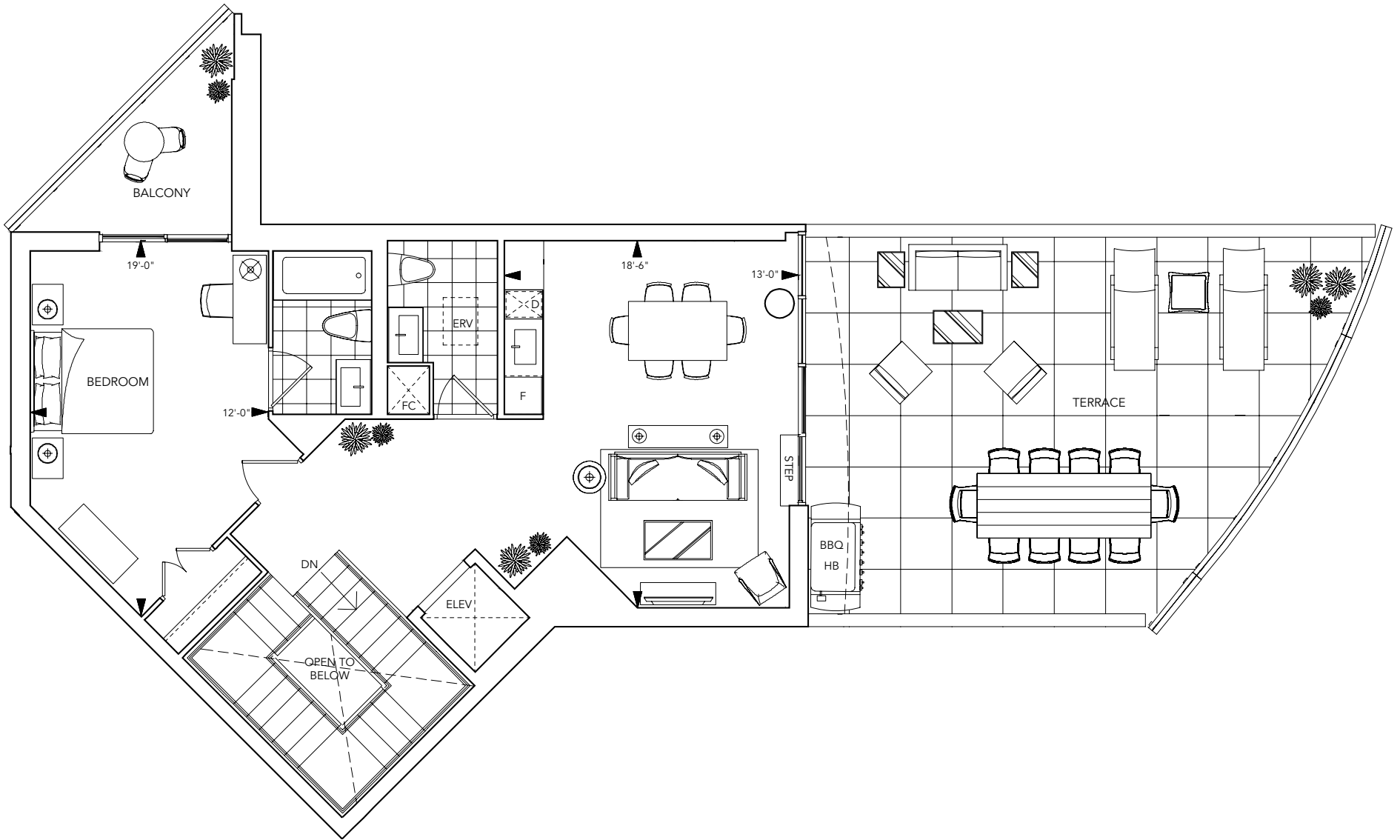
TWO BEDROOM / 2,794 SF



LEVEL 1

SUITE PH18 - Level 2

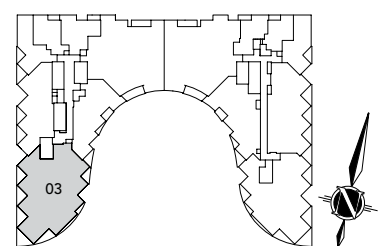
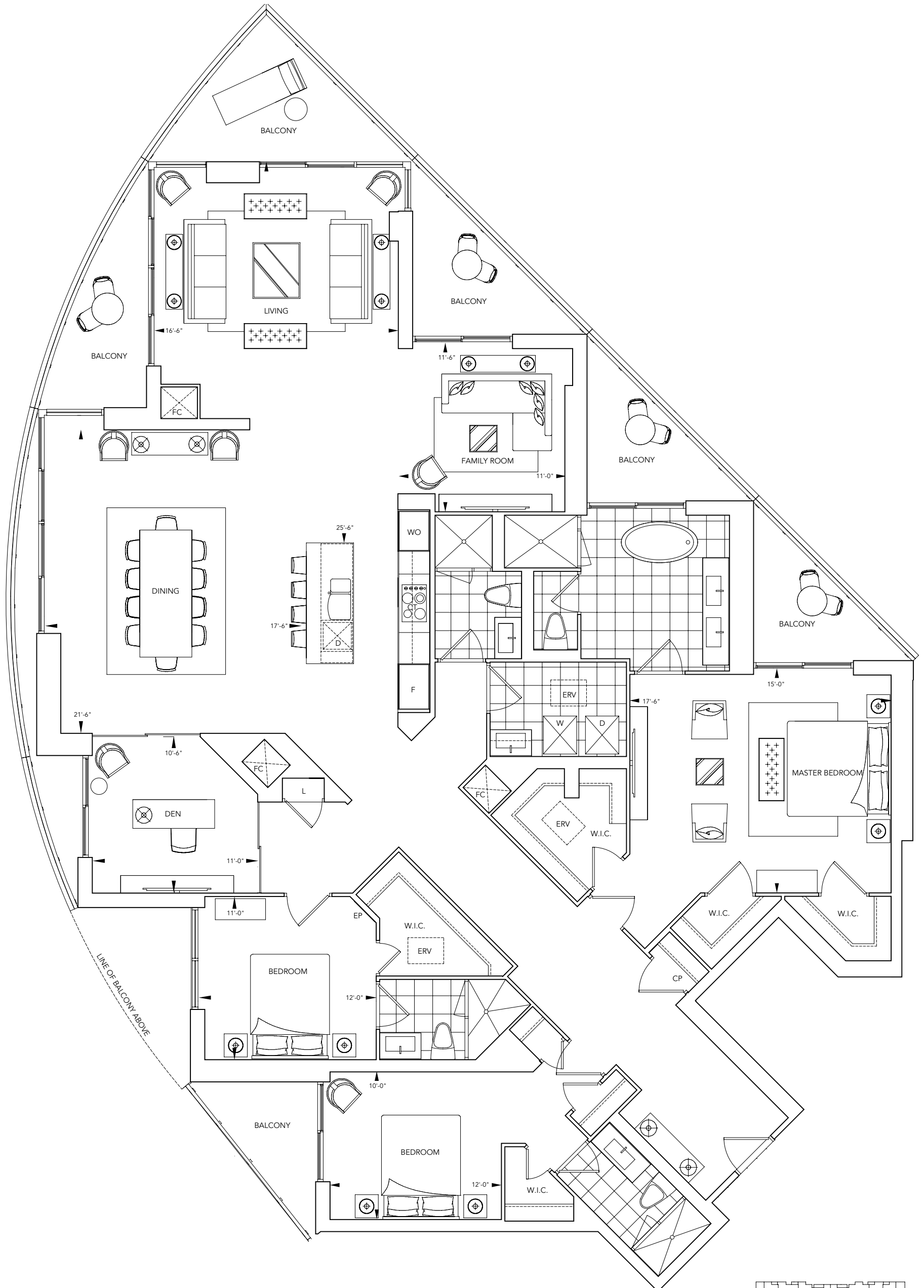
TWO BEDROOM / 2,794 SF



LEVEL 2

## SUITE PH3

TWO BEDROOM / 2,804 SF

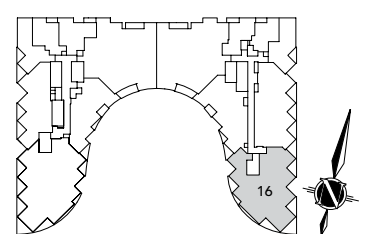
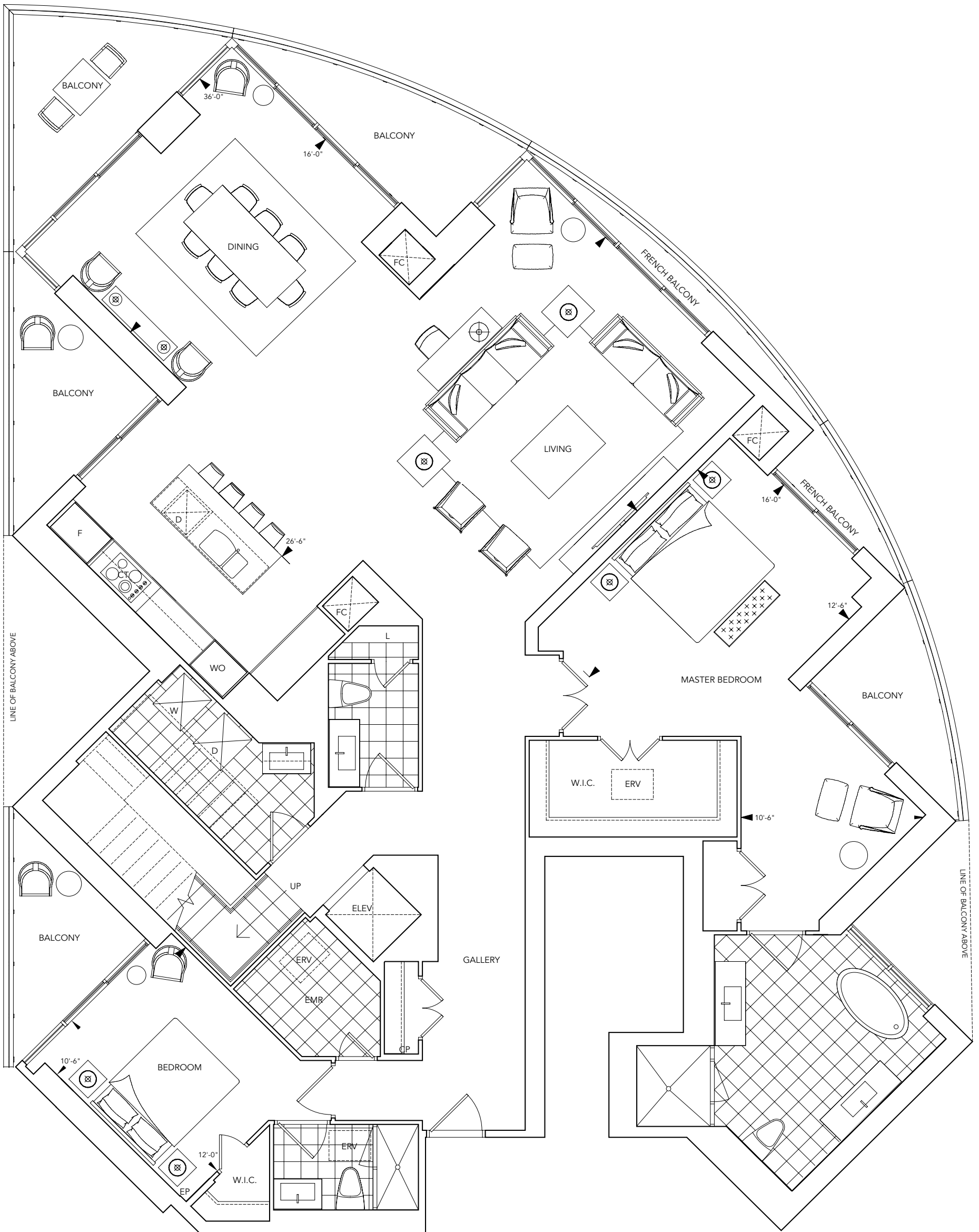


Some features may vary by suite design. \*Prices and specifications subject to change without notice. Illustrations are artists' concepts. Sizes and specifications are subject to change without notice. Furniture is displayed for illustration purposes only and does not necessarily reflect the electrical plan for the suite. Suites are sold unfurnished. See sales representative for details. Tridel® and Tridel Built Green. Built for Life.® are registered trademarks of Tridel and used under license. ©Tridel 2014. All rights reserved. E. & O.E. December 5, 2014.

FLOOR PH1

SUITE PH16 - Level 1

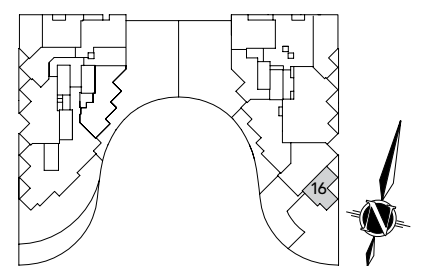
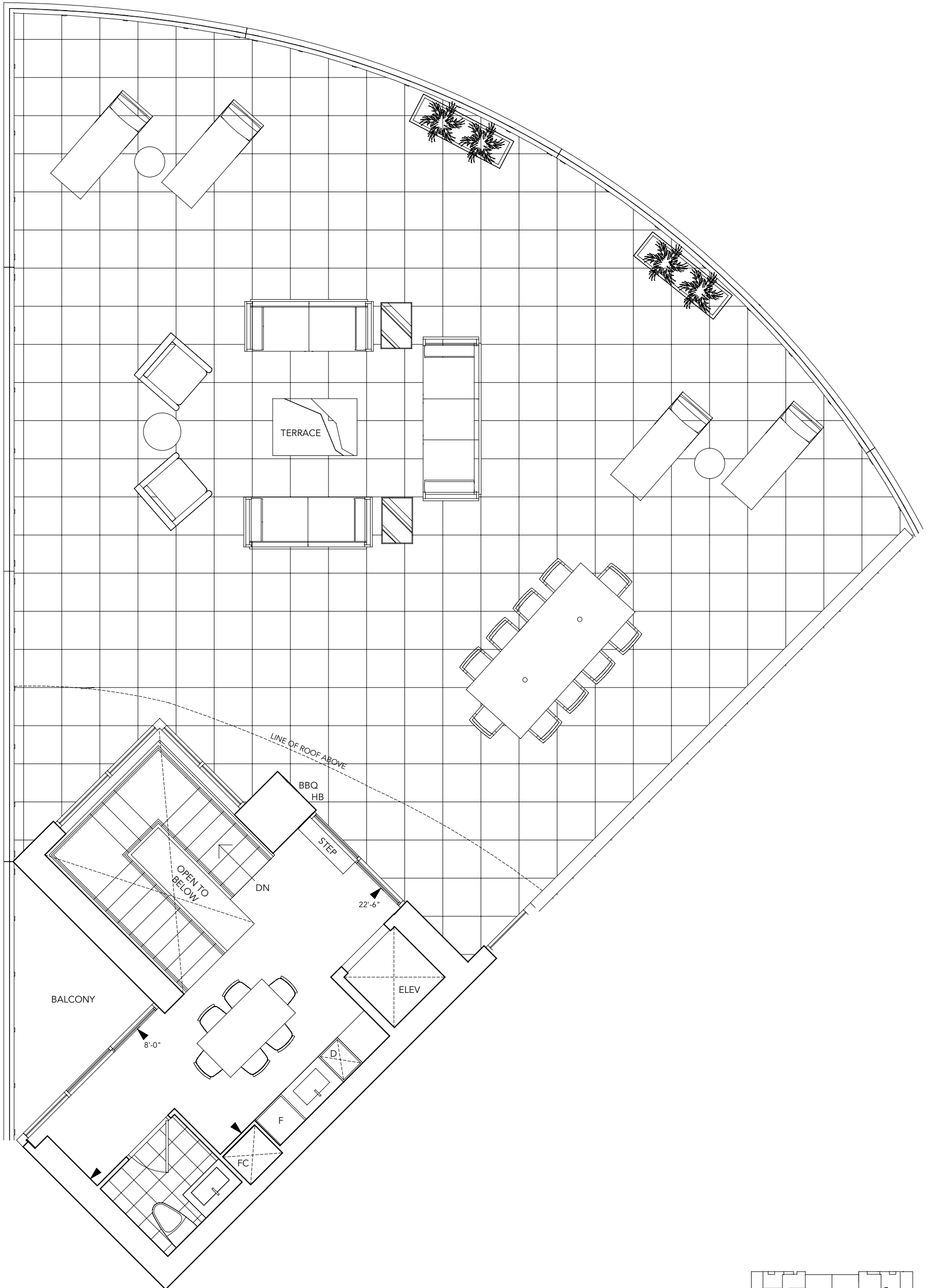
TWO BEDROOM / 2,880 SF



Some features may vary by suite design. \*Prices and specifications subject to change without notice. Illustrations are artists' concepts. Sizes and specifications are subject to change without notice. Furniture is displayed for illustration purposes only and does not necessarily reflect the electrical plan for the suite. Suites are sold unfurnished. See sales representative for details. Tridel® and Tridel Built Green. Built for Life.® are registered trademarks of Tridel and used under license. ©Tridel 2014. All rights reserved. E. & O.E. December 5, 2014.

SUITE PH16 - Level 2

TWO BEDROOM / 2,880 SF



Level 2

Some features may vary by suite design. \*Prices and specifications subject to change without notice. Illustrations are artists' concepts. Sizes and specifications are subject to change without notice. Furniture is displayed for illustration purposes only and does not necessarily reflect the electrical plan for the suite. Suites are sold unfurnished. See sales representative for details. Tridel® and Tridel Built Green. Built for Life.® are registered trademarks of Tridel and used under license. ©Tridel 2014. All rights reserved. E. & O.E. December 5, 2014.







### **Aquavista Presentation Centre**

261 Queens Quay East  
Toronto, ON M5A 1B6

Tel. **416.514.2710**

Fax. **416.603.9560**

Email: **[aquavista@tridel.com](mailto:aquavista@tridel.com)**

### **Hours:**

Monday to Thursday:

11:00 am – 7:00 pm

Friday:

Closed

Saturday, Sunday and Holidays:

12 noon – 6:00 pm